

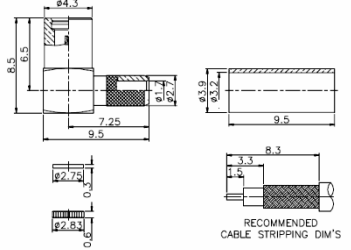
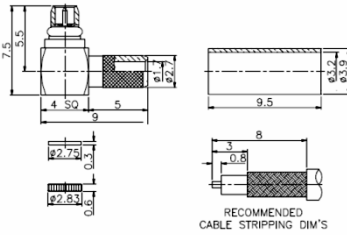
RF CONNECTORS / MMCX

RMMPC01R

DIMENSIONS

RMMJC01R

DIMENSIONS



**MMCX PLUG
CRIMP
RIGHT ANGLE**

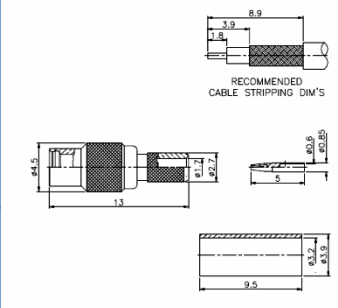
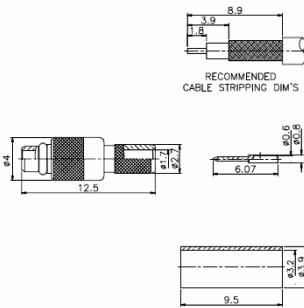
**MMCX JACK
CRIMP
RIGHT ANGLE**

RMMPC01

DIMENSIONS

RMMJC01

DIMENSIONS



**MMCX PLUG
CRIMP
STRAIGHT**

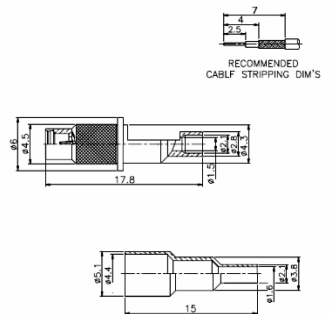
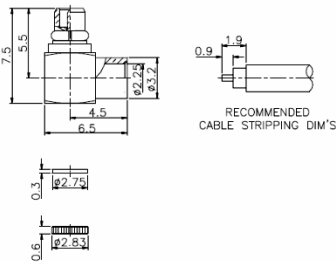
**MMCX JACK
CRIMP
STRAIGHT**

RMMPS01R

DIMENSIONS

RMMJC02

DIMENSIONS



**MMCX PLUG
DIRECT SOLDER
RIGHT ANGLE**

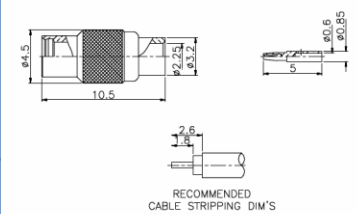
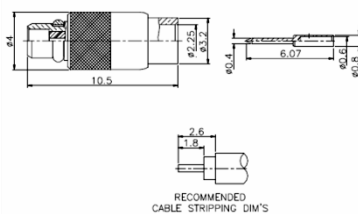
**MMCX JACK
CRIMP
STRAIGHT**

RMMPS01

DIMENSIONS

RMMJS01

DIMENSIONS



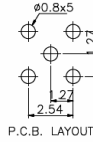
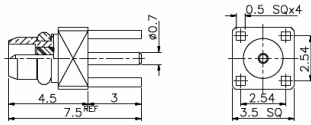
**MMCX PLUG
P.C.B. MOUNT
STRAIGHT**

**MMCX JACK
DIRECT SOLDER
STRAIGHT**

RF CONNECTORS / MMCX

RMMSP01

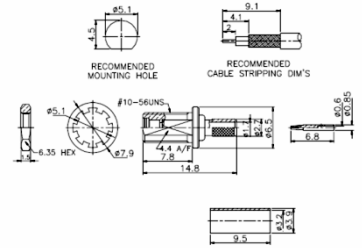
DIMENSIONS



**MMCX PLUG
PCB MOUNT**

RMMJCB01

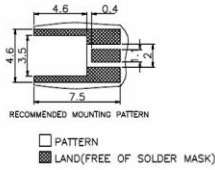
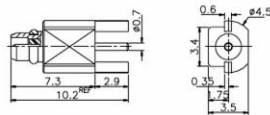
DIMENSIONS



**MMCX JACK
CRIMP
BULKHEAD**

RMMSPE01

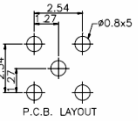
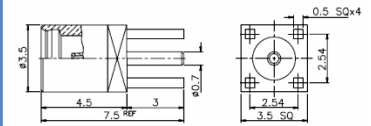
DIMENSIONS



**MMCX PLUG
END LAUNCH
SMT**

RMMSJ01

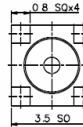
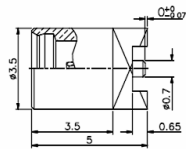
DIMENSIONS



**MMCX JACK
PCB MOUNT**

RMMSJT01

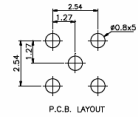
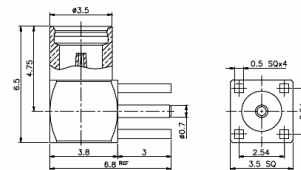
DIMENSIONS



**MMCX JACK
SMT**

RMMSJ01R

DIMENSIONS

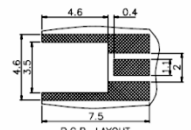
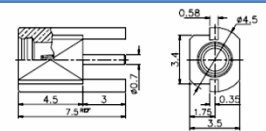


**MMCX JACK
P.C.B. MOUNT
RIGHT ANGLE**

DIMENSIONS

RMMSJE01

DIMENSIONS



**MMCX JACK
END LAUNCH
SMT**